

## BeneHeart D20

Defibrillator / Monitor

# Empowering Every Second



reddot winner 2023





# Smart Touch, More Intuitive

## Capacitive Full-Touch Screen

With advanced high-definition capacitive touch screen technology and flat UI design, D20 offers optimal experience of clearer display and smoother operation, enabling efficiency at your fingertips.



### Optimal visibility

- 8" display with 1024x768 resolution
- Auto-brightness

### Confident operation

- Gesture-control touchscreen
- Keep physical knob and buttons for key operations

### Wide adaptability

- With the intelligent sensing, you can operate D20 normally even if
- the screen is wet
  - wearing up to 5 layers of gloves



### All in one

Manual defib /AED /Pacing /Monitoring: ECG, SPO<sub>2</sub>, NIBP, CO<sub>2</sub>



### Ultra-light

Only 4.2kg(with battery) for exceptional portability



### Versatile paddles

External paddles with contact indicator improve usability for clinicians



### Three-step operation

Power-Charge-Shock buttons for rapid and reliable operation



### Auditory and visual indication

Trace the operation process with the help of sound and light indicators

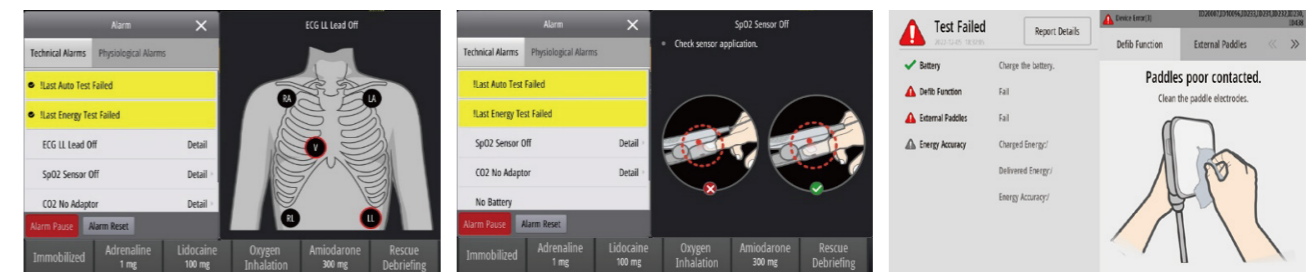


### Build-in recorder

Enable multiple report printouts e.g. waveform, alarm, event, review, test

## Visual AlarmSight

D20 provides a series of problem-solving support with graphical visualization, not only alerting you to the problems, but also suggesting solutions to help resolve them.



## Extensive Data Storage

1000 sets  
events

120 hours  
ECG waveform

200 hours  
trend data

1000 sets  
auto test reports

8 hours  
voice recording





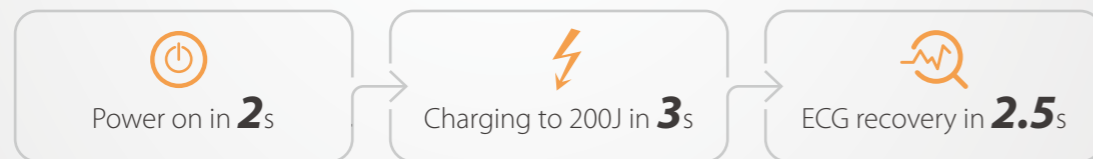
## Rescue Triangle, More Comprehensive

High-quality rescue requires the resuscitation team to maintain the high quality and effectiveness of cardiopulmonary resuscitation during the rescue process. It also relies on timely, regular review and analysis of the rescue data and rescue quality that helps identify the routine training and assessment. Only by combining and advancing the three-in-one solution can the quality of rescue and the survival rate of SCA patients be improved.

### Faster Resuscitation

#### QShock® -Faster to Shock

In line with the BeneHeart series, D20 is also equipped with new QShock® technology, taking less than 5s from power on to shock.



### Shorter Interruption

Mindray has developed state-of-the-art technologies that can filter out the compression interference for both ALS and BLS, to effectively reduce pauses in recognizing heart rhythm<sup>[1]</sup>.

Raw ECG with compression interference



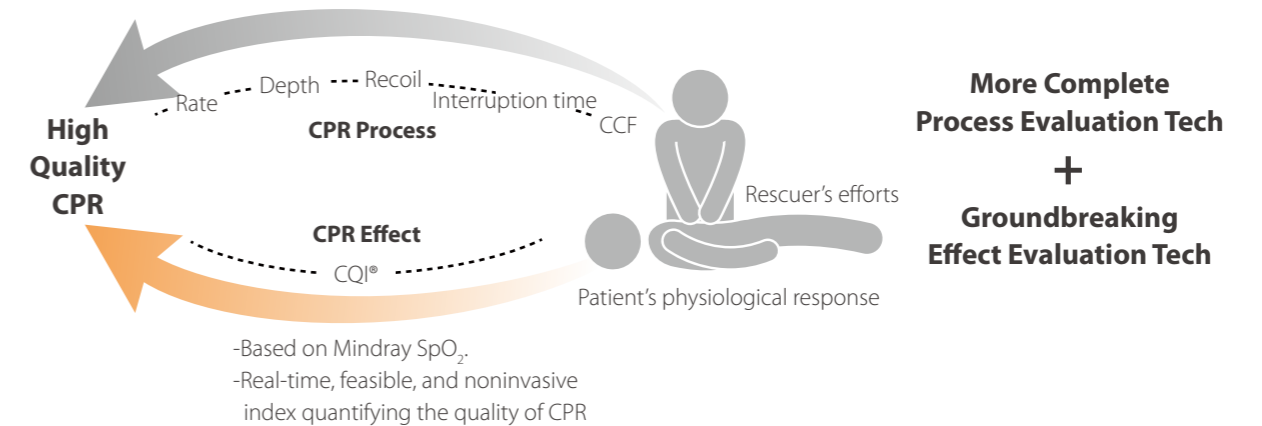
Filtered ECG without compression interference



[1] only available when you perform CPR using defib pads or the CPR sensor.

### CPR Feedback of both Process & Effect

With the CPR process feedback monitoring the real-time performance of rescuers, and the effect evaluation reflecting patients' responses to the rescue, D20 provides a comprehensive assessment of CPR quality to obtain a satisfactory resuscitation result.



### Structured Debriefing

D20's structured debriefing protocols improve the performance of resuscitation teams in subsequent resuscitation events.

- The key data of each rescue is automatically uploaded to the debriefing system.
- CPR quality and defibrillation data included.
- Not only post-event analysis, but also periodic review.



### Hands-on Training

- Training mode in D20 help you get real operation experience.
- Both single and multi-person mode are available.
- Support CPR and defib operation training



# Redefine Toughness with Innovation

Preparing for varied scenarios and contingencies, D20 is designed to take on every new challenge in hospital environments anytime, anywhere. D20 empowers clinicians to respond confidently to changing clinical requirements and stay prepared for whatever comes their way.



0.75m drop protection of all six sides



IP55 water-/dust-proof



Bend-resistant cable, withstanding hundreds of thousands of bending tests



Resistant to 49 disinfectants



Bedrail hook for convenient nosocomial transhipment

# Keep Connected with Greater Efficiency

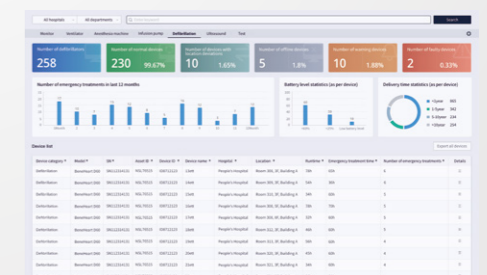
M-Connect™ IT solution integrates the patient data from D20 to avoid manual recording errors and allows flexible viewing of patient data on mobile devices anytime, anywhere. Its simple yet robust network connection is compatible with standard information infrastructure in most hospitals.



## M-IoT Device Manager

M-IoT Device Manager obtains comprehensive device data to help biomedical engineers ensure the safety and effectiveness of all equipment at all times.

- Real-time failure monitoring and guidance for timely maintenance, reducing equipment downtime
- Battery status monitoring to ensure patient safety by limiting interruptions
- IP/MAC address for network access control to ensure cybersecurity



*The specification may vary depending on the installation environment and usage conditions of the main unit, for details please refer to the manual.*